



INFO SHEET

EUROPEAN DOUGLAS 'HEAVY METAL'



INFO SHEET

EUROPEAN DOUGLAS 'HEAVY METAL'

1 GENERAL PRODUCT INFORMATION

SURFACE TEXTURE medium brushed

FINISH TYPE core smoked, bleached, oiled & hardwaxed ultra mat

COLOUR INFO* colour variation:

very even colour	light colour variation	medium colour variation	strong colour variation
	✓		

Please note that wood grades with more characteristics (such as knots, cracks, heart line) show more colour variation.

colour behavior: very little changes over time.

**Although we strive to portray wood structure and colour as realistically as possible in all our samples and images, a single sample or any image can never act as a representation of an entire floor: no rights can be derived. Wood is natural material: variation in grain and colour occurs. Floors may also change over time due to the influence (or lack) of UV light, wear & tear, and maintenance.*

CONSTRUCTION
 21 → 6 mm douglas + 15 mm birch plywood
 24 → 6 mm douglas + 18 mm birch plywood

AVAILABILITY
PREMIUM MULTIPLANK XXL

	SELECT / NATURAL	MILL RUN
21 x 300 x 2000 - 3000 mm	✓	✓
21 x 300 x 2600 - 5000 mm*	✓	✓
24 x 380 x 2600 - 5000 mm*	✓	✓

* min 50% ≥ 3800 mm

GRADES



Select/Natural



Mill Run



example of a plug

Select/Natural	knots max 3 cm, knot holes replaced with plugs, small open knots filled with putty, limited sapwood.
Mill Run	sound knots without restrictions, knot holes replaced with plugs, heart- and sapwood allowed, occasional (end)cracks with a length up to the width of the board.

General notes:

- Douglas contains resin. During the production of our floors, and even after installation, this resin sometimes comes up out of the wood. This is common for douglas and is not regarded as a defect or valid reason to file a complaint.
- Sometimes resin pockets occur; hollow spots inside the wood, filled with resin. These resin pockets are replaced by 1x7 or 2x14 cm wood plugs.
- Douglas sometimes shows differences in colour and grain structure between, and within batches. These differences are common to douglas and are to be accepted.
- Due to the soft nature of the wood, minor dents/scratches/damages may occur during the production of the floor. This cannot always be avoided entirely. This is therefore to be accepted in up to max 5% of the boards. If this is not acceptable, we recommend ordering 10% extra material.

BEVELS micro bevels on the long sides only

OPTIONS fixed lengths
 customized bevels
 hardwaxed satin mat
 Varnax – innovative, mat anti-scratch hybrid coating
 misc. patterns (see next chapter)
 complementary products (cladding for walls and ceiling, stair elements, windowsills, etc)

2 PATTERNS

MIXED WIDTH choose 2 or 3 widths and install these in a repeated system

RANDOM WIDTH choose 2 or 3 widths and install these in a random pattern

HERRINGBONE

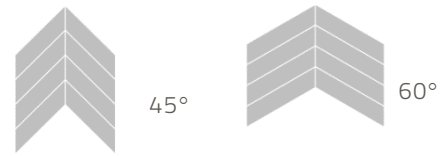
	SELECT / NATURAL	MILL RUN
16 x 140 x 700 mm	✓	✓
21 x 140 x 700 mm	✓	✓
21 x 300 x 900 mm	✓	✓

other dimensions on request



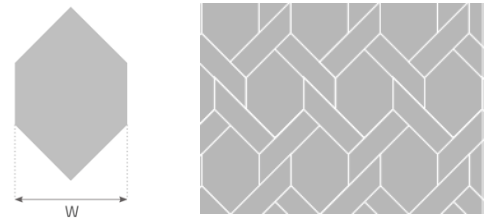
CHEVRON

in consultation only



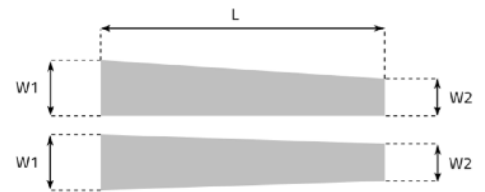
MANSION WEAVE

in consultation only



(SEMI) TRAPEZIUM

WIDTH 1	WIDTH 2	LENGTH
300	210	1500
380	260	2000



CUBE

WIDTH
600
760



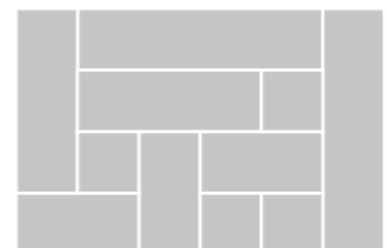
QUADRO

WIDTH
300
380



CREATIVE

WIDTH	LENGTHS
300	300 600 900 1200



3 SOCIAL AND ENVIRONMENTAL RESPONSIBILITIES

WOODlife's owners genuinely believe their employer's responsibility goes beyond just being good for your employees. Therefore, their production facility is granted an accredited social status, meaning that at least 50% of the employees has a certain degree of incapacity for work due to invalidity, disablement, deafness, personality disorders, and so on.

The European douglas used is harvested from controlled German forests, largely from PEFC- and FSC®-certified forests. Our FSC-certificate can be downloaded from our website.



Our products are finished using low-emission natural oils, hardwax oils and water-based lacquers produced by Saicos Colour, Germany.



WOODlife's multiplanks have an Excellent rating according to BREAAAM. The approval implies that the products have passed tests for all major European regulations on the presence of VOC's and Formaldehyde in wooden flooring. Our flooring does not contain any solvents, isocyanides, formaldehyde, Creosote, Arsenic or Chrome.



We do not waste any wood. Leftovers are used to produce skirting and home decorations. The remainder, as well as all our saw dust, is used as fuel wood to heat the entire factory including drying kilns. This reduces our carbon footprint substantially.

4 INSTALLATION & MAINTENANCE

INSTALLATION

- We recommend taking app 7-8% saw waste for regular flooring and 12-14% for pattern flooring into account when calculating the amount needed.
- Storage in the room at least 48 hours before installation. Packs are to be kept closed.
- During installation, humidity should be between 35% and 70%, temperature between 18 ° to 24 ° Celsius.
- Installation method: glue down or screw down is recommended, floating installation is possible in most cases.
- Always take local installation standards into account.
- Douglas floors up to 300 mm are suitable for under floor heating.
- All oiled WOODlife floors are finished with natural oils and waxes and have been fully cured at the factory. Unlike oxidative oiled floors, our floors are fully hardened upon arrival and can therefore be used in any space, without any restrictions.

Also see the following documentation:
WOODlife Flooring – installation guidelines.

CARE & MAINTENANCE

- After installation, relative humidity levels in the rooms should always be kept between 30% and 70%.
- Please be aware to place humidifiers/vaporizers during the wintertime if needed.
- Ventilate the spaces on a regular basis.
- Our floors require regular maintenance; frequency strongly depends on type of use. A rough guideline:

Daily cleaning:

Periodic cleaning:

Maintenance at regular use:

Maintenance at intensive & commercial use:

Dry cleaning

Saicos Wash Care (parquet friendly soap for mopping)

Saicos Wax Care (maintenance oil), 1 or 2 times per year

Saicos Wax Care (maintenance oil), 3 or 4 times per year

Also see the following documentation:

WOODlife Flooring – maintenance guide.

Copyright © 2021 by WOODlife Flooring BV.

All rights reserved.